

bloCHaus

Apogee | Chicago

Apogee, the rooftop at the Dana Hotel & Spa, overlooks the River North neighborhood in Chicago from 26 stories up. Designed by award-winning Chicago design firm, bloCHaus, Apogee's ambiance is both sophisticated and captivating; the experience encourages social revelry at every turn. Inspired by the history of Chicago and its multitude of cultural scenes, the interior boasts fluted walnut panels and marble-clad walls, while pops of blue resemble the rich sapphire color of Lake Michigan on a beautiful, sunny day. The showstopping wall panels were constructed out of more than three miles of half-inch solid walnut strips. Custom-made vintage-inspired light fixtures and modern chandeliers are positioned throughout, reflecting the grand nature of the nighttime cityscape. Elevating the ultra-modern atmosphere, a grand bar runs through the length of space, featuring handmade tiles and gold grout. Positioned off the elevators is an intimate lounge with plush mohair sofas and custom brass partition screens, offering wide-reaching snapshots of the city.



The main bar with custom brass and satin black lighting by bloCHaus



The carefully curated communal restrooms



Lounge seating along the perimeter of the windows overlooking River North

Photos by MIKE SCHWARTZ

Design Team
 Interior Design - Owner/Creative Director **Nick Bowers** Studio Head **Elizabeth Cruz**
 Project Designer **Hanna Hanson** Millwork/Carpentry - Owner, WR Precision Millwork **Rizard Lis**

CONTACT
 bloCHaus | Nick Bowers | nick@blochhaus.com | (312) 485-9925 | www.blochhaus.com

blocHaus

Sparrow Coffee | Naperville, Illinois



The contemporary café's overhead structures add rhythm, depth, and dimension



The elevated bar flanks the bustling barista zone

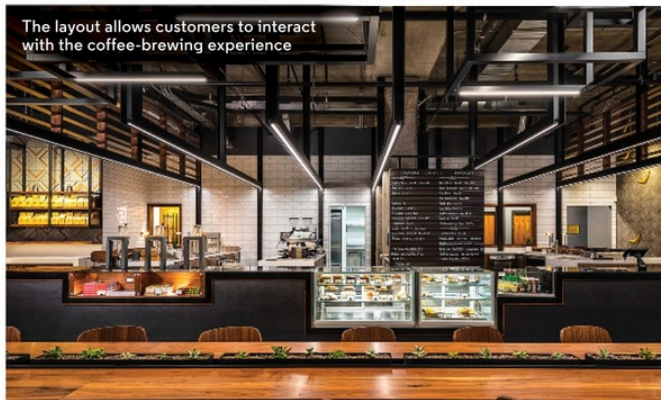
Sparrow Coffee in Naperville, Illinois is the brand's first retail experience. The clean lines and contemporary design create a coffee experience unlike any other. This new café, designed by blocHaus, opened in last February. Sparrow Coffee's mission for perfection partnered perfectly with blocHaus' ability to deliver a one-of-a-kind product tailored to the brand.

The layout allows for nearly every seat in the contemporary café to have a view of the talented barista as they craft specialty creations. Every machine is intended to be a focal art piece. Creating a rhythm with its linear architectural structure, H-beams run overhead to provide downlight from an LED source in the center of the channel before returning up to the ceiling at the front counter. The industrial chic H-beam

detail was also integrated into blocHaus' custom A-frame table design as a metal channel running down the center of the powered walnut tables. Suspended above the communal café seating is a massive, custom 3D cube light sculpture designed by blocHaus. The clean lines and boxy dimensions complement the long lines created by the H-beams and the geometry of the graphic concrete and wood tile within the retail space. Custom industrial T-lamps illuminate the semi-elevated walnut bar tops that flank the bustling barista zone. Inspired by Sparrow Coffee's namesake bird, blocHaus created an abstract, dimensional sparrow installation comprising handcrafted gold sparrows, which descend into the café.



Communal café seating populates the downtown Naperville storefront



The layout allows customers to interact with the coffee-brewing experience

Design Team

Interior Design - Owner/Creative Director **Nick Bowers** Studio Head **Elizabeth Cruz**
Project Designer **Hanna Hanson** Millwork/Carpentry - Owner, WR Precision Millwork
Rizard Lis owner, Zakrose, Inc. **Zak Rose**

CONTACT

blocHaus | Nick Bowers | nick@blochhaus.com | (312) 485-9925 | www.blochhaus.com